

## Denominational Review Briefing

18 March 2020  
Updated November 2020

The Education Service has carried out a review of Midlothian's denominational school provision in the context of a national shortfall in the availability of teachers with the approval necessary to teach in Roman Catholic (RC) schools. In 2016 the Catholic Church through Archbishop Tartaglia declared a 'crisis in faith education' due to the shortage of Catholic teachers in Catholic Schools (The Tablet.co.uk June 2016). This situation has not improved since 2016 and as a result Midlothian Council continues to explore how best to stabilise the denominational sector in Midlothian.

The RC primary schools across Midlothian currently operate with only 50% of teaching staff having Church approval; shared headship arrangements in place for four of our RC primary schools, some of which are unsustainable; and ongoing challenges in relation to recruitment of both teaching and senior leadership staff.

In Midlothian we have seven RC primary schools with a total of 917 pupils and one RC secondary school with 689 pupils which serves Musselburgh as well as Midlothian. The overall percentage of children attending our RC primary schools in 2019/20 who have a declared affinity with the RC faith is 40%:

RC Primary School	Roll 2020	Roll 2019	Percentage RC (2019)
Sacred Heart	132	127	34%
St Andrew's	156	157	36%
St David's	197	192	41%
St Luke's	202	201	34%
St Margaret's	18	40	48%
St Mary's	152	135	51%
St Matthew's	60	55	41%
	<b>917</b>	<b>907</b>	<b>40%</b>

Our objective is to stabilise and strengthen RC provision and denominational education within and across Midlothian. In March 2020 the Education Service agreed, in partnership with our head teachers, a preferred model for our RC schools and planned to progress to statutory consultation as quickly as possible. However Covid19 has delayed our plans and it has not, to date, been possible to carry out the further engagement activities that we are committed to prior to engaging in statutory consultation. Consequently statutory consultation has been delayed and there will be no change to the model of our RC schools for August 2021 pupil registration.

Covid19 permitting, we will resume engagement activities in respect of the preferred model in the early part of 2021. These pre-consultation activities will involve all relevant key stakeholders, including staff, children, parents and Church representatives. These activities will inform the report which we intend to take to Council in June 2021 to obtain governance to proceed to statutory consultation.

## **Preferred Model - March 2020**

The required outcomes we have applied in arriving at a preferred model are:

- To reduce the required complement of head teachers and teaching staff with Church approval;
- To create an RC school structure which provides opportunities for staff progression;
- To maintain sufficient primary RC school capacity across Midlothian;
- To minimise the detrimental effect on the number of pupils who will go on to attend St David's High School;
- To minimise the increase in distances for children to travel from home to school.

The preferred model is one based on 4 RC primary schools, with locations in Dalkeith, Gorebridge, Bonnyrigg and Penicuik, and 1 RC secondary school. Of all the models examined this is the only one which we consider to be viable in terms of reducing the number of schools, and therefore the overall required complement of teaching staff and head teachers with Church approval, while maintaining sufficient primary RC capacity across Midlothian, and minimising the detrimental effect on the number of pupils who will go on to attend St David's High School.

This model will still be, in the short to medium term, challenging to sustain in terms of teacher staffing, particularly for head teacher and other management positions. To address this we will invest in a workforce plan specifically for our RC schools which will strengthen our ability to grow our own RC teachers, middle managers and head teachers. We intend to work closely with the Diocese, Scottish Catholic Education Service and initial teacher education establishments to develop plans to develop and build capacity across the denominational sector.

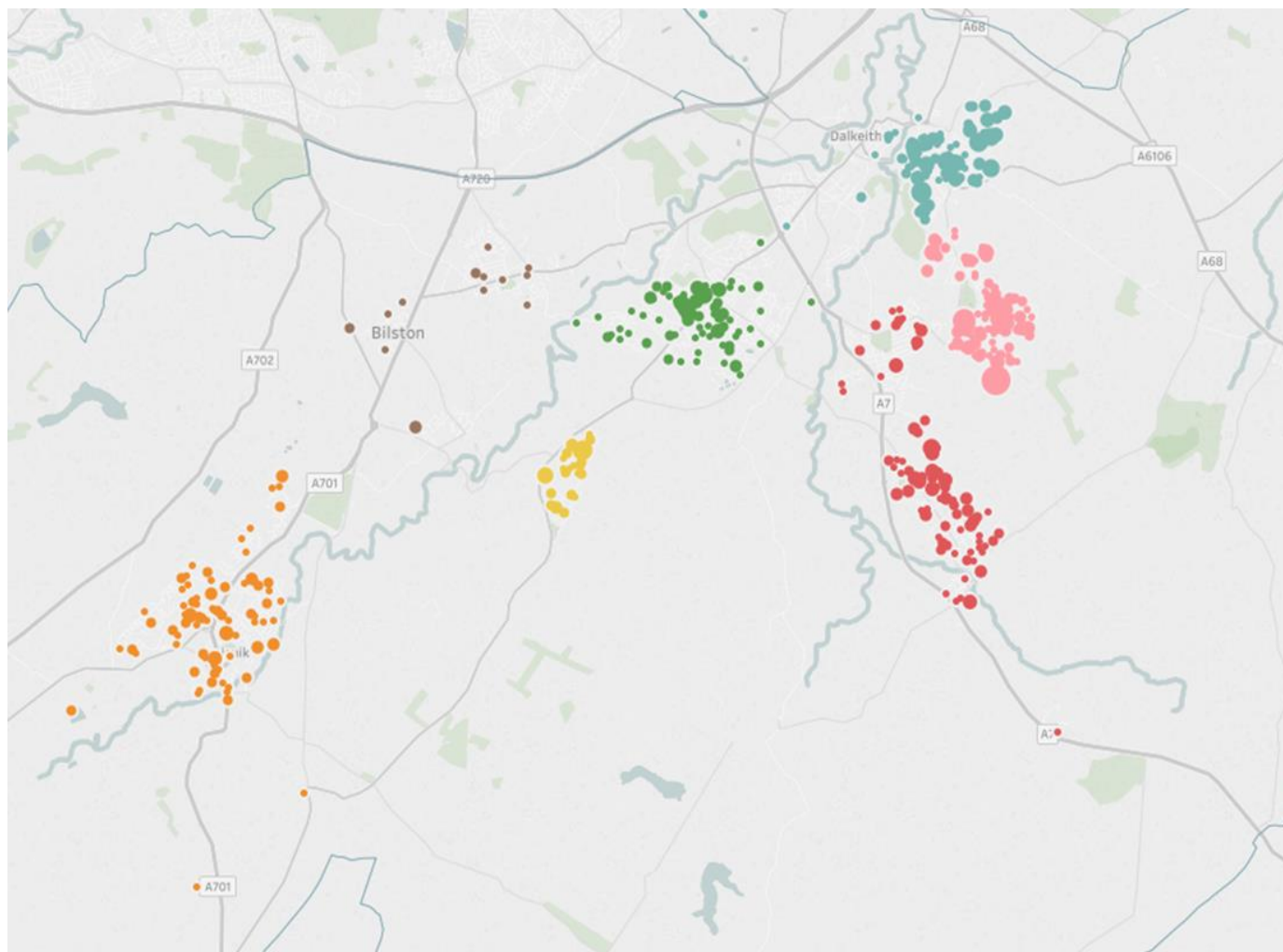
## **Preferred Model for RC Primary Schools**

- One RC primary school in Dalkeith located on the St David's RC Primary School site to serve Dalkeith, Danderhall, Easthouses and rural areas.
- One RC primary school in Gorebridge located on the St Andrew's RC Primary School site to serve Gorebridge, Newtongrange, Mayfield and rural areas.
- One RC primary school in Bonnyrigg located on the St Mary's RC Primary School site to serve Bonnyrigg, Loanhead and Rosewell.
- One RC primary school in Penicuik located on the Sacred Heart RC Primary School site to serve Penicuik, Bilston, Roslin and rural areas.

The detail of catchment areas for each school has yet to be finalised, it is intended that they will be based on the shortest distance from home to school, including consideration of available safe routes to school. This is particularly relevant for the current catchment areas of St Luke's and St Margaret's RC Primary Schools.

## Current Model

The dots on the map represent current Midlothian resident pupils' postcode locations, colours show RC school catchments, the table shows home to school distances. The average distance from home to school is 0.5 miles

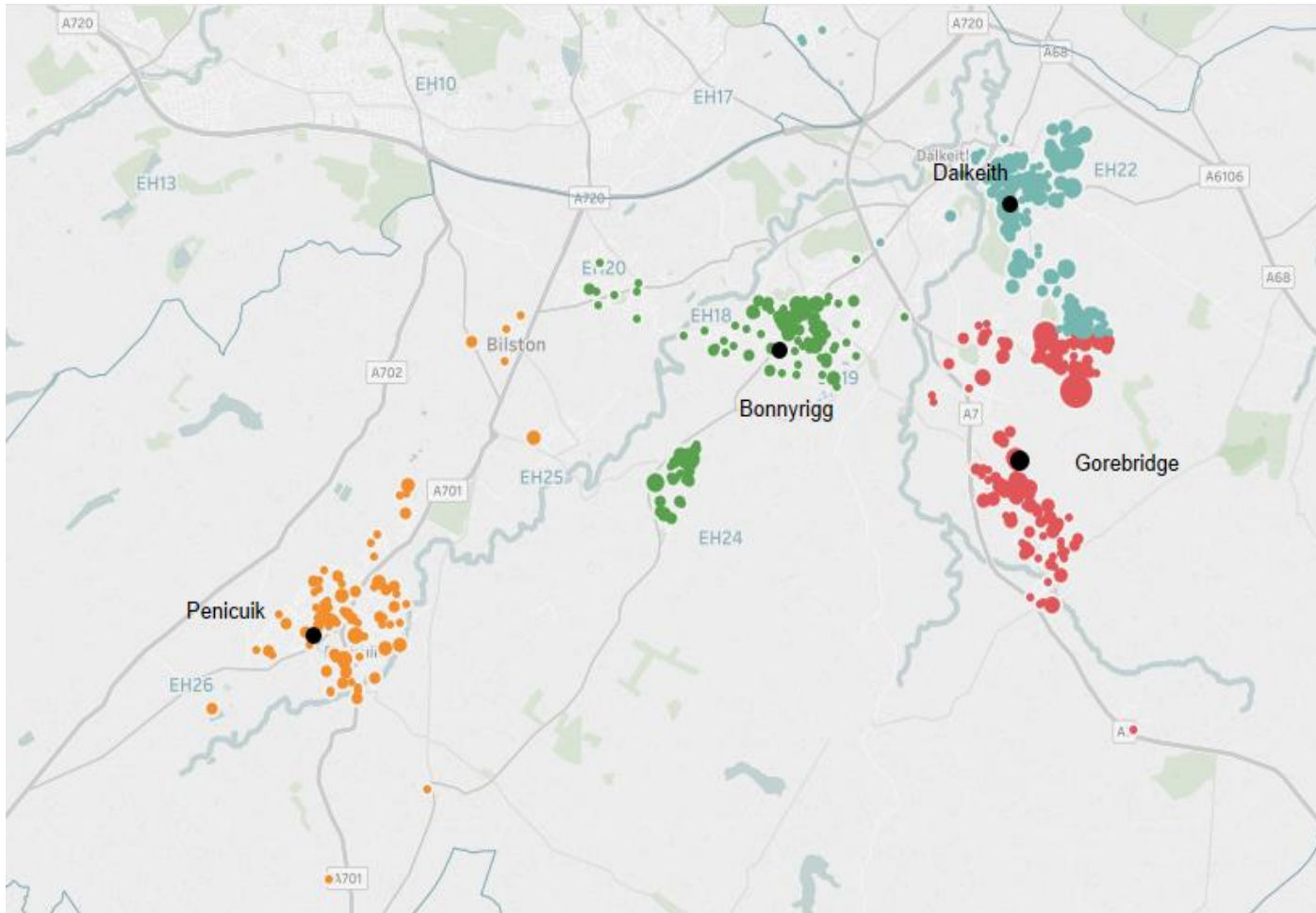


Home to school distance				
Current Model	Min. Distance	Avg. Distance	Max. Distance	No Records
Sacred Heart Primary School	0.0	0.6	2.3	121
St Andrew's RC Primary School	0.0	0.6	2.7	155
St David's RC Primary School	0.1	0.5	2.6	192
St Luke's RC Primary School	0.1	0.4	1.0	218
St Margaret's RC Primary School	0.2	1.0	1.9	17
St Mary's RC Primary School	0.0	0.4	1.2	123
St Matthew's RC Primary School	0.1	0.3	0.6	48
Grand Total	0.0	0.5	2.7	874

Sacred Heart
St Andrew's
St David's
St Luke's
St Margaret's
St Mary's
St Matthew's

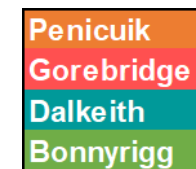
## Preferred Model

The dots on the map represent current pupils' postcode locations, colours show proposed RC school catchments, the table shows home to school distances. The average distance from home to school is 0.8 miles, an increase of 0.3 miles in average distance from home to school.



Home to school distance				
	Min. Distance	Avg. Distance	Max. Distance	Number of Records
Preferred Model				
Bonnyrigg	0.0	0.9	4.6	180
Dalkeith	0.1	0.6	2.6	290
Gorebridge	0.0	1.0	2.7	275
Penicuik	0.0	0.8	3.6	129
Grand Total	0.0	0.8	4.6	874

Preferred model. Home to school distance				
	Min. Distance	Avg. Distance	Max. Distance	Number of Records
From current RC catchment				
Sacred Heart Primary School	0.0	0.6	2.3	121
St Andrew's Primary School	0.0	0.6	2.7	155
St David's Primary School	0.1	0.5	2.6	192
St Luke's Primary School	0.4	1.2	1.8	218
St Margaret's Primary School	2.0	3.3	4.6	17
St Mary's Primary School	0.0	0.4	1.2	123
St Matthew's Primary School	1.2	1.6	1.9	48
Grand Total	0.0	0.8	4.6	874



## Projected Primary Pupil Numbers for Preferred Model

Preferred Model - One RC primary school in each major settlement							
Dalkeith, Danderhall, Easthouses		Gorebridge, Mayfield, Newtongrange		Bonnyrigg, Loanhead, Rosewell		Penicuik, Bilston, Roslin	
St David's site		St Andrew's site		St Mary's site		Sacred Heart site	
Projection	2029	Projection	2029	Projection	2029	Projection	2029
Dalkeith	202	Gorebridge	175	Bonnyrigg	149	Penicuik	146
Danderhall	20	Mayfield	47	Rosewell	33	Bilston/Roslin	14
Easthouses	51	Newtongrange	31	Loanhead	17		
<b>Total</b>	<b>273</b>	<b>Total</b>	<b>253</b>	<b>Total</b>	<b>199</b>	<b>Total</b>	<b>160</b>

The pupil numbers projected for 2029 use the same assumptions as those in the Learning Estate Strategy pupil projections other than where there is a change of location. In these cases as their catchment RC school is further away we have assumed that only those of RC faith are likely to make the choice to attend an RC school.

The pupil projections in the table assume that the catchment of the RC primary school in Bonnyrigg will include the Loanhead area and the catchment of the RC primary school in Gorebridge will include the Mayfield area. The detail of catchment areas for each school have yet to be finalised, it is intended that they will be based on the shortest distance from home to school, including consideration of available routes.