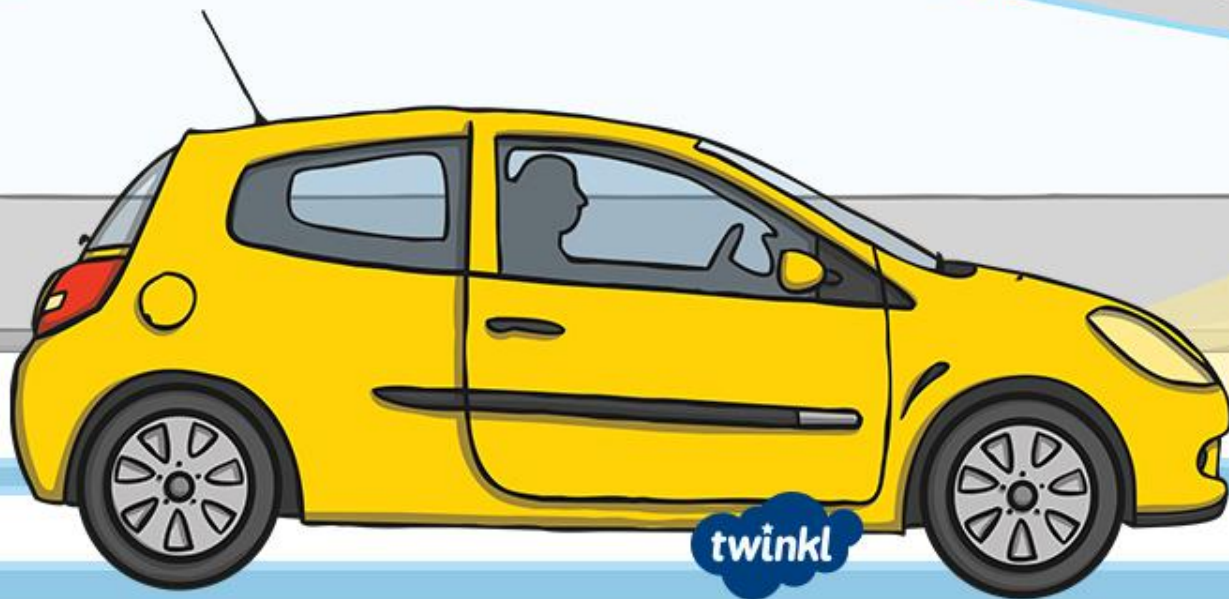


# Staying Safe in the Winter



# What Is Winter?

Winter is one of the four seasons.  
It is the season that comes after autumn.



# What Happens In Winter?



Some trees and plants stop growing in the winter. During any other season, the situation is different.

# Winter Fun

There are many outside activities that people enjoy in the winter season.



What activities do you like to do?

# Staying Safe

There are so many fun things to look forward to during the winter but winter can also bring dangers.



We need to think carefully about how to stay safe.



# Road Safety in Winter

Look at the picture, why do you have to be extra careful walking to school in the winter?



# Weather

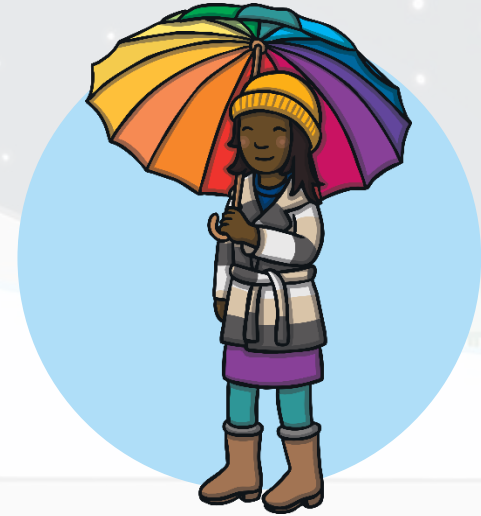
Why does the weather make it dangerous when crossing the road?



Pavements around the roads might be slippery. It is important to wear shoes with grips.



People wear hats to keep them cosy and this can stop them from hearing the traffic.



If it is raining or snowing, people use umbrellas or put up their hoods to keep dry. This can block their view.

# Be Bright, Be Seen

During the winter months, it is dark in the morning.  
It gets dark early in the evening too.

To keep safe walking to and from school you should:



wear bright clothes



wear reflective clothing



# Be Bright, Be Seen



Reflective materials glow brightly when light shines onto them.

Fluorescent clothes show up well during the day and at dusk.

# Be Bright, Be Seen

To keep safe at night, it is a good idea to wear clothes that are reflective **and** fluorescent.



Can you think of anyone who wears fluorescent and reflective clothing?

Q1

Name two things that make crossing the road dangerous in winter.



**Weather**



**Dark mornings and  
nights**



**Q2**

**What type of clothes are best to wear to be seen?**

**a. sparkly**

**b. bright**

**c. dull**

**d. warm**

Q3

Who wears fluorescent and reflective clothing to help you cross the road?



A lollipop person



Q4

Why is it important to wear shoes that grip in the winter?



To stop you slipping next to the road.

Q5

What is special about reflective clothing?



It glows when light hits it.

Winter is a fun time of year but  
remember to...

**Be Bright, Be Seen**



